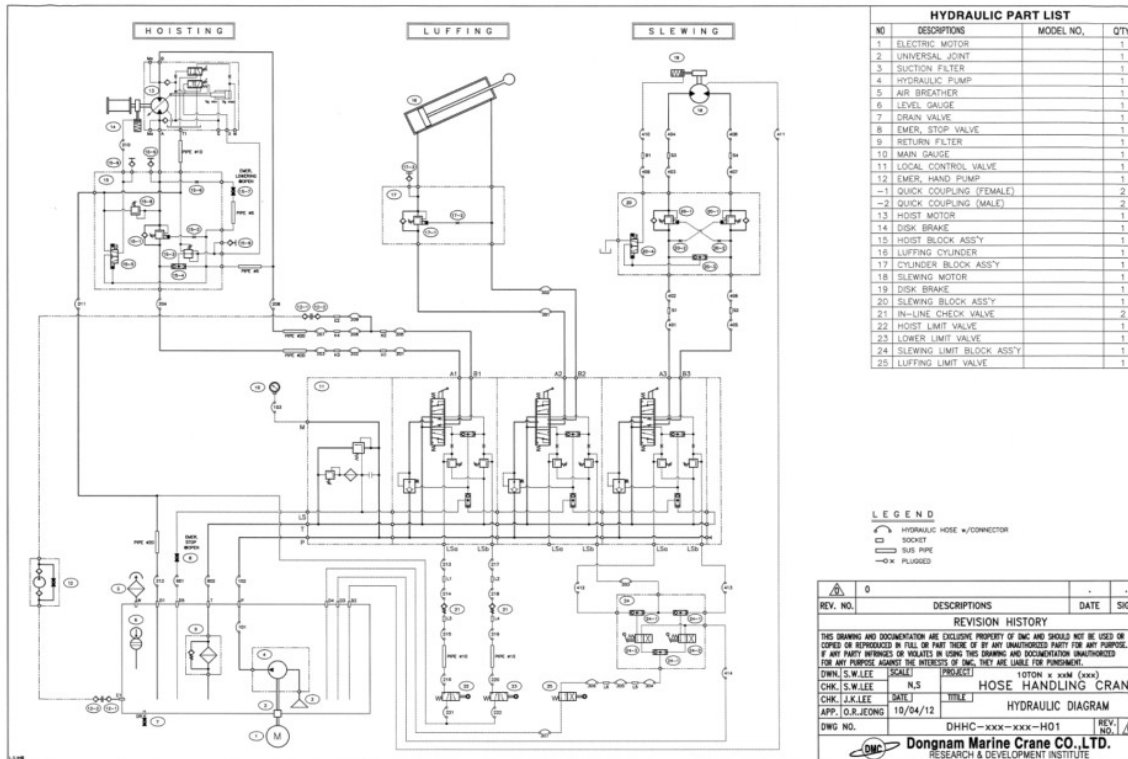


HOW TO FIT HOSE AND HOSE CONNECTOR



Each crane system usually consists of about 70 hydraulic hoses and 150 hose connectors, based on the generic hydraulic diagram shown below. Due to the complexity in fitment and volume of these hoses and connectors, identifying and installing them correctly has often been a time-consuming and challenging task—even for experienced crew members and crane engineers. To make things easy and simple, Zenith MarineTech has developed 3D representation of the crane components that replicates the actual equipment layout. Each hose and connector is numbered and clearly marked by hot stamping on the hoses also, further making the whole assembly process very simple and minimizing the scope of any error. Our drawings come with our own part numbers to match up with the stamping on the hoses also, for easy comprehension of the drawings and assembly subsequently. No crane makers shall provide this information upfront - which Zenith marinetechn has done for our seafarers and also the ship managers.



Hoses over 70pcs per crane



Hose connectors over 150pcs per crane

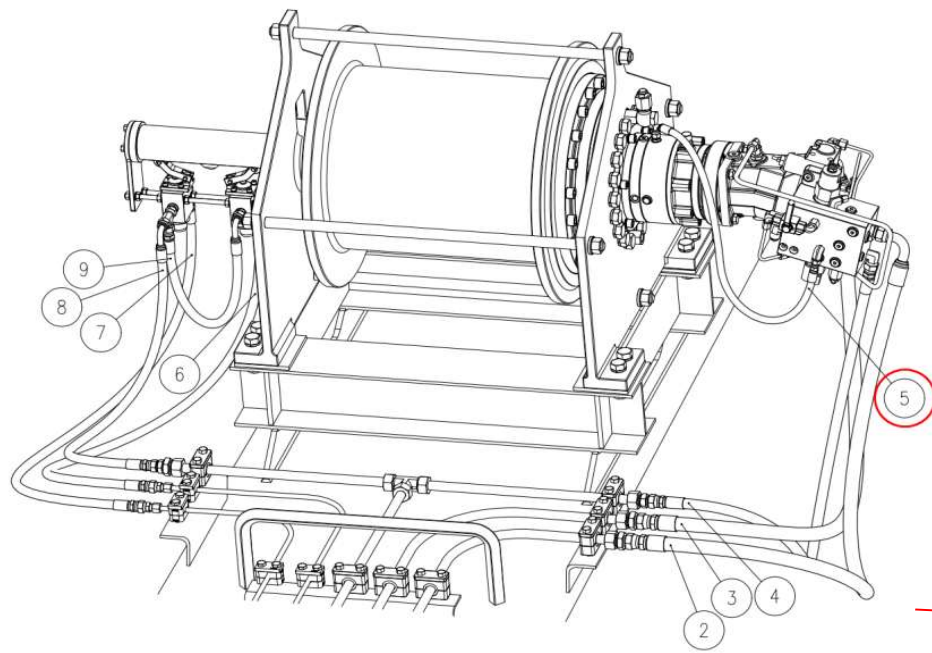


HOW TO FIT HOSE AND HOSE CONNECTOR




The hoses and fittings when supplied to the vessels, are accompanied with the print of this, in an A3 size paper, for ready reference of the seafarers. Our depiction matches the actual crane equipment as it is usually a replication of the actual crane itself, thus ensuring even a layman can perform the task of hose renewal and fittings renewal confidently and without confusion or error. This allows for freedom of carrying out the job as per vessels schedule and upkeeping the crane all the time without any dependence on the shore team or workshop assistance.

HOISTING WINCH-01 (HW-01)



Hose drawing

9	S00000485	HYD. HOSE	1 EA	221
8	S00000484	HYD. HOSE	1 EA	222
7	S00000483	HYD. HOSE	1 EA	220
6	S00000482	HYD. HOSE	1 EA	216
5	S00000481	HYD. HOSE	1 EA	210
4	S00000480	HYD. HOSE	1 EA	211
3	S00000479	HYD. HOSE	1 EA	208
2	S00000478	HYD. HOSE	1 EA	204
1	S00000477	FULL SET OF HYD. HOSE	1 SET	-
NO.	PART NO.	DESCRIPTION	Q'TY	REMARKS(HOSE NO.)
<small>THIS DOCUMENT IS PROPRIETARY AND IS FORWARDED BY ZENITH MARINETECH WITHOUT WRITTEN PERMISSION OF ZENITH MARINETECH. SUCH INFORMATION SHALL NOT BE PUBLISHED OR DISCLOSED TO OTHERS, USED FOR ANY OTHER PURPOSE EXCEPT THE PURPOSE SPECIFIED, AND DOCUMENT SHALL NOT BE REPRODUCED IN WHOLE OR IN PART.</small>				
APPROVED		DESIGNED		
BY :		BY :  ZENITH MARINETECH		
DOC. NAME :		HYD. HOSE		

Section and Part No. HW-01.05 on brake line hose

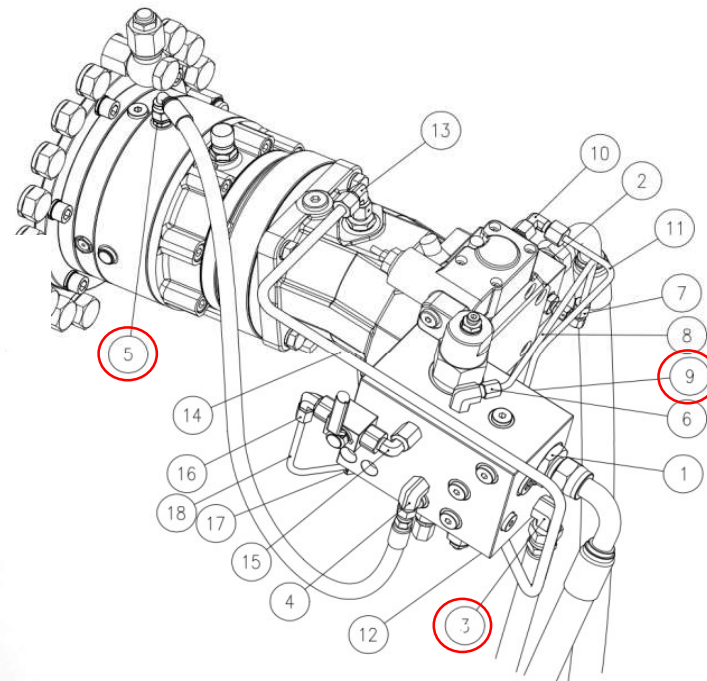


HOW TO FIT HOSE AND HOSE CONNECTOR



The hoses and fittings when supplied to the vessels, are accompanied with the print of this, in an A3 size paper, for ready reference of the seafarers. Our depiction matches the actual crane equipment as it is usually a replication of the actual crane itself, thus ensuring even a layman can perform the task of hose renewal and fittings renewal confidently and without confusion or error. This allows for freedom of carrying out the job as per vessels schedule and upkeeping the crane all the time without any dependence on the shore team or workshop assistance.

HOISTING WINCH-02 (HW-02)



Hose connector drawing

18	S00000002-014	OIL PIPE	1 EA	--
17	S00000002-015	HYD. FITTING	1 EA	--
16	S00000002-013	HYD. FITTING	1 EA	--
15	S00000002-012	HYD. FITTING	1 EA	--
14	S00000156	OIL PIPE	1 EA	--
13	S00000155	HYD. FITTING	1 EA	--
12	S00000002-011	HYD. FITTING	1 EA	--
11	S00000154	OIL PIPE	1 EA	--
10	S00000153	HYD. FITTING	1 EA	--
9	S00000002-010	HYD. FITTING	1 EA	--
8	S00000152	OIL PIPE	1 EA	--
7	S00000004-003	HYD. FITTING	1 EA	--
6	S00000002-009	HYD. FITTING	1 EA	--
5	S00000151	HYD. FITTING	1 EA	210
4	S00000002-008	HYD. FITTING	1 EA	210
3	S00000002-007	HYD. FITTING	1 EA	211
2	S00000004-002	HYD. FITTING	1 EA	208
1	S00000002-006	HYD. FITTING	1 EA	204
NO.	PART NO.	DESCRIPTION	Q'TY	REMARKS(HOSE NO.)
THIS DOCUMENT IS PROPRIETARY AND IS FURNISHED BY ZENITH MARINE TECH, WITHOUT WRITTEN PERMISSION OF ZENITH MARINE TECH, SUCH INFORMATION SHALL NOT BE PUBLISHED OR DISCLOSED TO OTHERS, USED FOR ANY OTHER PURPOSES EXCEPT THE PURPOSE SPECIFIED. ANY VIOLATION SHALL NOT BE TOLERATED IN WHOLE OR IN PART.				
APPROVED BY :		DESIGNED BY :		
DOC. NAME :		HYD. FITTING		
		ZENITH MARINE TECH		

Section and part No. HW-02.01,03,05 on connector

HOW TO FIT HOSE AND HOSE CONNECTOR



The hoses and fittings when supplied to the vessels, are accompanied with the print of this, in an A3 size paper, for ready reference of the seafarers. Our depiction matches the actual crane equipment as it is usually a replication of the actual crane itself, thus ensuring even a layman can perform the task of hose renewal and fittings renewal confidently and without confusion or error. This allows for freedom of carrying out the job as per vessels schedule and upkeeping the crane all the time without any dependence on the shore team or workshop assistance.

